

Panasonic recommends Windows® 7.

# Panasonic

ideas for life



## TOUGHBOOK CF-H2 FIELD. FULLY RUGGED FIELD TABLET.

TRANSFORMING THE WAY  
MOBILE PROFESSIONALS WORK.

The Toughbook CF-H2 is a unique tool. Unique in its ability to transform the way mobile professionals work - wherever and whenever that might be. Designed to perform in the most challenging of environments, it connects field workers with the critical data, applications and digital tools they need to be more effective and more productive than ever before.

- Intel® Core™ i5-2557M vPro processor
- Genuine Windows® 7 Professional
- Intel® HD 3000 graphics
- Extremely bright 10.1" transreflective plus LCD with Dual Touch and circular Polarizer (up to 6.000cd/m<sup>2</sup> transreflective brightness, depending on light conditions)
- Circulumin™ Display Technology
- Vibration and shock resistant (MIL-STD 810G)\*
- Water and dust resistant (IP65, MIL-STD 810G)\*
- Lightweight form factor - weighing only 1.58kg
- Dual hot swappable batteries providing up to 6.5 hours battery life
- USB, LAN and Serial Port (depends on model)
- Integrated Barcode Reader options
- Smartcard Reader optional
- Camera optional
- GPS optional
- RFID optional

\* Tested by an independent third party lab following IEC 60529, sections 13.4, 13.6.2, 14.2.5, 14.3



**TOUGHBOOK** When it's worth doing better.

[www.toughbook.eu](http://www.toughbook.eu)

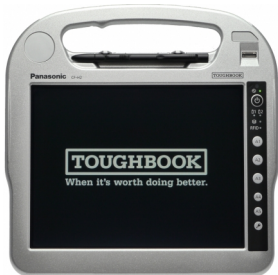
Panasonic recommends Windows® 7.



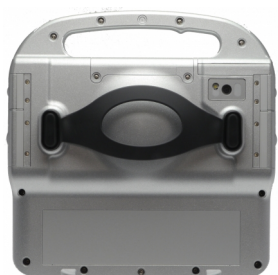
# MOBILE BUSINESS EXCELLENCE

**FOR PROFESSIONAL USERS WHO REQUIRE OPTIMUM MOBILITY, RELIABILITY AND CONNECTIVITY.**

With its rugged, ergonomic design, long battery life and transfective sunlight view screen, the Toughbook CF-H2 field tablet is the ideal tool to access applications and data in the most difficult mobile environments.



Mobile Computing Platform	Intel® Core™ i5-2557M vPro™ processor (1.7GHz, 3MB Intel® Smart Cache, Intel® 6 series Express chipset QM67)	
Operating System		
RAM	2GB DDR3 SDRAM (max. 8GB)	
Graphic Chip	Intel® HD Graphics 3000, UMA (Windows 7® 64bit max 1696MB, 32bit max 1557MB)	
Storage	160GB HDD (SATA) or 128GB SSD (Contact Smartcard Reader Model)	
LCD	10.1" sunlight-viewable transfective plus XGA Active Matrix (TFT) colour LCD with circular polarizer (up to 500cd/m <sup>2</sup> transmissive and 6.000cd/m <sup>2</sup> transfective brightness, depending on light conditions) and Circulum™ technology	
Bluetooth™	Version 2.1 + EDR Class 1	
WLAN	Intel® Centrino® Advanced-N 6205 AGN WLAN IEEE 802.11 a/b/g/n compliant	
Sound	Monaural speaker, supporting Intel® High Definition Audio subsystem	
Input Devices	Dual Touch (resistive Touchscreen & Digitizer)	
	Buttons	Application 2 to 5 (depends on Model)
LEDs	Power, Battery 1 charge status, Battery 2 charge status, HDD status, RFID status	
Interfaces	External Display	None (available at optional Cradle)
	Serial (RS232C)	x1
	LAN	x1 (depends on model)
	USB 2.0	x1 (2nd USB depends on model, eliminates LAN)
	Docking connector	x1 Cradle I/O
	DC-IN	x1
Security	TPM (Trusted Platform Module, TCG V1.2 compliant)	
Power	AC Adaptor	Input: 100 V-240 V AC, 50 Hz/60 Hz, Output: 16 V DC, 3.75 A
	Battery Pack	Li-ion 7.2V, 3400 mAh x2 packs hot swappable
	Operating Time	Approx. 6.5 hours (MobileMark™ 2007, 60cd/m <sup>2</sup> LCD brightness)
Dimensions (WxHxD)	274mm × 268mm × 58mm {10.8" × 10.6" × 2.3"}	
Weight	Approx. 1.58kg (Approx. 3.5lb) (including the hand strap)	
Optional Features	Barcode Reader	
	3G Mobile Broadband (HSPA+, 21Mbps DL)	
	Combined Contactless Smart Card (ISO 14443 Type A/B) and RFID Reader (ISO 15693)	
	Contact Smartcard Reader	
	2MP Camera with Autofocus and single LED light	
	GPS	
	Fingerprint Reader	
Accessories	Additional AC Adaptor	CF-AA6373A
	Battery Pack	CF-VZSU53A
	4 Bay Battery Charger	CF-VCBU11U
	Cradle (White)	CF-VEBH21U
	Cradle (Black)	CF-VEBH21KU



Intel, the Intel logo, Intel Core, Intel vPro, Core Inside and vPro Inside are trademarks of Intel Corporation in the U.S. and other countries. Microsoft® and Windows® are registered trademarks of Microsoft Corporation of the United States and/or other countries. All other brand names shown are the registered trademarks of the relevant companies. All rights reserved. All working conditions, times and figures quoted are optimum or ideal levels and may differ as a result of individual and local circumstances. Panasonic Marketing Europe GmbH, Panasonic Computer Products Europe Headquarters, Hagenauer Straße 43, 65203 Wiesbaden (Germany).

**Panasonic**  
ideas for life

www.toughbook.eu